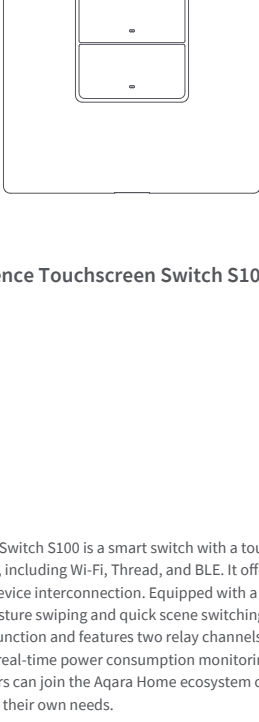


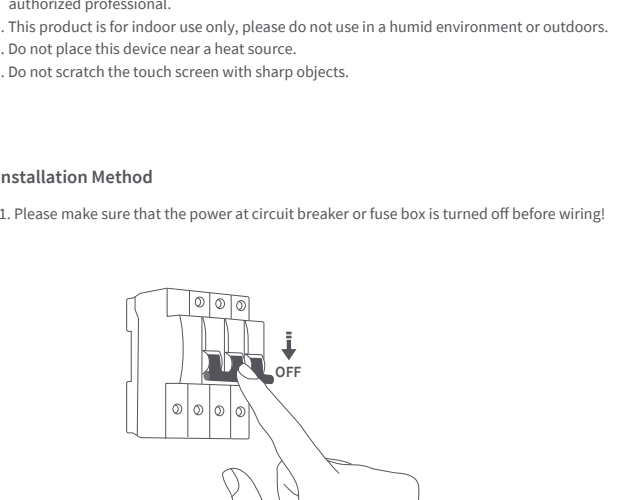
# Aqara



## Presence Touchscreen Switch S100 US EN

### Product Introduction

The Presence Touchscreen Switch S100 is a smart switch with a touchscreen that supports multiple wireless protocols, including Wi-Fi, Thread, and BLE. It offers light control, automation scene settings, and multi-device interconnection. Equipped with a 1.3-inch high-definition touchscreen, it supports gesture swiping and quick scene switching. The device also supports the Thread Border Router function and features two relay channels. Additionally, it allows for remote control via an app, real-time power consumption monitoring, and monthly energy consumption statistics. Users can join the Aqara Home ecosystem or a third-party supported Matter ecosystem based on their own needs.



#### Note:

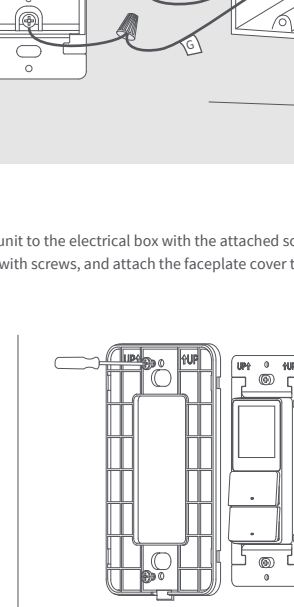
Matter Ecosystem: A Matter-compatible hub is required to use this device with Matter.  
 Aqara Ecosystem: For Aqara Home integration, you will need the Aqara Home app and an Aqara hub that supports Matter.  
 Functionality: Please note that certain advanced features are exclusive to the Aqara Home app.

### Warnings

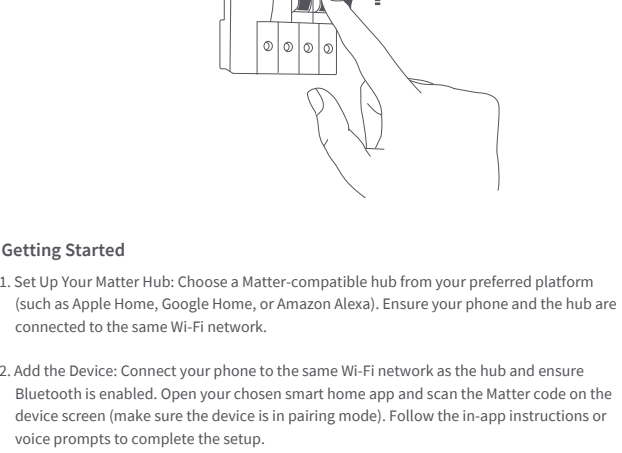
- Installing this product involves high voltage electricity, and it must be conducted by professionals in accordance with the electrical specifications and the product specifications as detailed in the product manual for installation.
- Keep away from moisture, do not spill water or other liquids on this product.
- This is a hard-wired device. An easily accessible disconnection device (like a disconnect switch) should be installed externally. Both the disconnection device and the equipment must be installed by professionals.
- Updating the device's firmware and system with unauthorized may pose security risks such as rendering the device unusable or leaking your personal information. It is recommended to update online.
- Do not attempt to repair this product by yourself. All repairs should be performed by an authorized professional.
- This product is for indoor use only, please do not use in a humid environment or outdoors.
- Do not place this device near a heat source.
- Do not scratch the touch screen with sharp objects.

### Installation Method

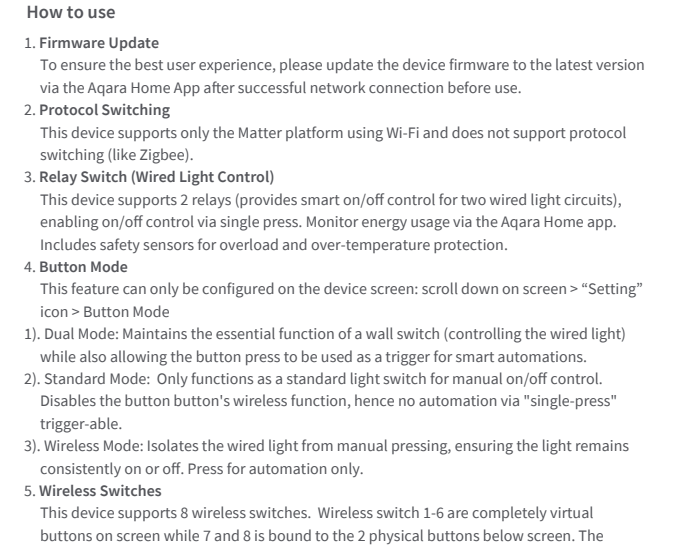
- Please make sure that the power at circuit breaker or fuse box is turned off before wiring!



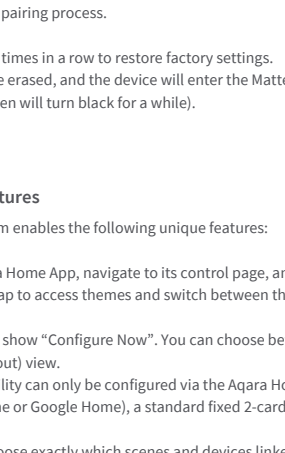
- Please follow the instructions below to determine your home's circuit type and wire it correctly. We recommend seeking assistance from a professional electrician.



- Mount the switch unit to the electrical box with the attached screws. Then mount the frame to the switch unit with screws, and attach the faceplate cover to the frame.



- Turn on the main power switch. If the screen turns on normally, the switch is working properly.



### Getting Started

- Set Up Your Matter Hub: Choose a Matter-compatible hub from your preferred platform (such as Apple Home, Google Home, or Amazon Alexa). Ensure your phone and the hub are connected to the same Wi-Fi network.
- Add the Device: Connect your phone to the same Wi-Fi network as the hub and ensure Bluetooth is enabled. Open your chosen smart home app and scan the Matter code on the device screen (make sure the device is in pairing mode). Follow the in-app instructions or voice prompts to complete the setup.  
 \*We recommend using the Aqara Home app to access the full range of advanced features and settings, such as device/scene linking and screen layout.
- Multi-Platform Control: To add your device to another ecosystem, do not reset it. Instead, use your existing app to generate a Matter pairing/sharing code. Then, open the second platform's app and use that code to connect. Note that each platform requires its own Matter-compatible hub.

### How to use

#### 1. Firmware Update

To ensure the best user experience, please update the device firmware to the latest version via the Aqara Home App after successful network connection before use.

#### 2. Protocol Switching

This device supports only the Matter platform using Wi-Fi and does not support protocol switching (like Zigbee).

#### 3. Relay Switch (Wired Light Control)

This device supports 2 relays (provides smart on/off control for two wired light circuits), enabling on/off control via a single press. Monitor energy usage via the Aqara Home app. Includes safety sensors for overload and over-temperature protection.

#### 4. Button Mode

This feature can be configured on the device screen: scroll down on screen > "Setting" icon > Button Mode

- Dual Mode: Maintains the essential function of a wall switch (controlling the wired light) while also allowing the button press to be used as a trigger for smart automations.
- Standard Mode: Only functions as a standard light switch for manual on/off control. Disables the button's wireless function, hence no automation via "single-press" trigger-able.
- Trigger Mode: Isolates the wired light from manual pressing, ensuring the light remains consistently on or off. Press for automation only.

#### 5. Wireless Switches

This device supports 8 wireless switches. Wireless switch 1-6 are completely virtual buttons on screen while 7 and 8 is bound to the 2 physical buttons below screen. The screen supports wireless switches 1 - 8 to be displayed/removed on screen (Aqara Home). For non-Aqara Matter platforms, wireless switch 1-6 will be displayed on screen by default, only its automation is configurable. Wireless switches 1 - 8 can be used to trigger automation/scene, e.g., single pressing Wireless Switch 1 triggers the Good Morning scene.  
 \*The upper and bottom physical buttons correspond to wireless switches 7 and 8 when used in wireless/dual mode, it can not only be triggered via pressing the respective physical button, also be displayed on screen for straightforward access.

#### 6. Network Reset

Double-press any physical button, then hold for 5 seconds until the green light flashes. After the screen reboots (screen will turn black for a while), the Matter code will appear on screen, initiating the network pairing process.

#### 7. Factory Reset

Press any physical button ten times in a row to restore factory settings. All local and cloud data will be erased, and the device will enter the Matter code pairing page after device reboot (screen will turn black for a while).

### Aqara Home Exclusive Features

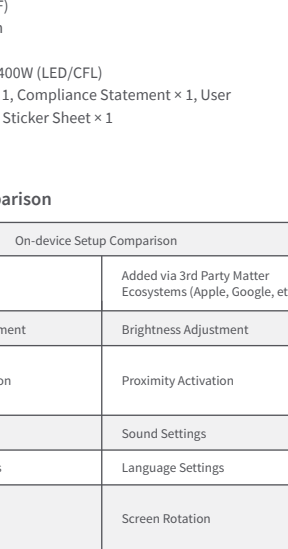
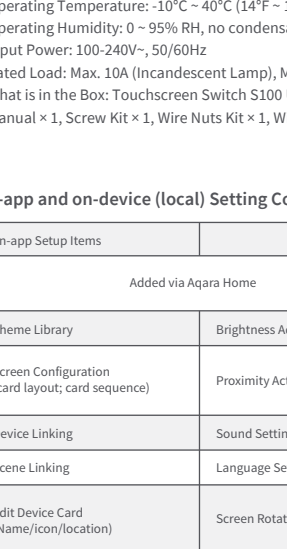
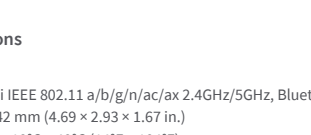
Connecting to the Aqara platform enables the following unique features:

#### 1. Theme Switching

Locate the device in the Aqara Home App, navigate to its control page, and find "Theme Library" under "Configure". Tap to access themes and switch between them.

#### 2. Screen Configuration

- If no layout is set, the app will show "Configure Now". You can choose between a Full Screen or Split-Screen (2-Layout) view.  
 \*Screen layout and item visibility can only be configured via the Aqara Home app. On other platforms (such as Apple Home or Google Home), a standard fixed 2-card layout will be applied on screen.
- Aqara Home allows you to choose exactly which scenes and devices linked to appear on the screen. You can easily hide items you don't use and keep the display clean.



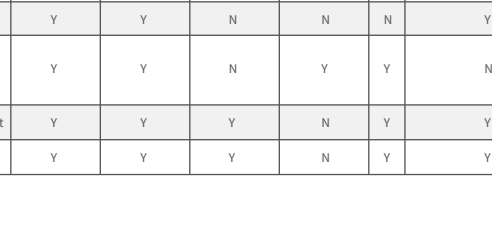
### Presence Detection

#### 1. Device Installation Suggestion

Please try to avoid facing large areas of metal, glass and other highly reflective surfaces. Also, avoid placing objects such as air conditioning vents, curtains, and fans within the device's detection range, as they may cause slight movement and interfere with presence detection.

#### 2. Presence Detection Range

The maximum detection distance of the device is 3m, and the detection angle is 120 degrees horizontally (the theoretical distance in an ideal laboratory environment). The detection range may vary slightly depending on the actual environment, installation height and angle of different spaces. At large angles, the maximum detection distance will be correspondingly shorter).



#### 3. Presence Detection Application

##### 1) Auto On/Off (Presence Trigger)

Once the device is added, scroll down on screen, tap the "setting" icon and find "Presence Detection" > "Presence Trigger". This allows respective button to automatically turn on/off the light wired behind based on presence detection.

##### 2) Presence-based Automations

In the device automations, presence/absence detected can be used as a trigger condition. For example: If no one (absence) is detected, turn off all living room lights.

### Indicator Light Description

Indicator light status	Description
Green indicator light quickly flashes 3 times	Device powered on
Green indicator light stays on for 1s	Pairing successful
Green indicator light flashes quickly	Pairing

### Button Operation

Single press	Turn On/Off
Double press, then press and hold for 5 seconds within 3 seconds	Reset the Device/Enable Pairing
Press any button 10 times continuously	Reset to factory settings

### Product Specifications

Model: WS-K06D  
 Wireless Protocols: Wi-Fi IEEE 802.11 a/b/g/n/ac/ax 2.4GHz/5GHz, Bluetooth, Thread  
 Dimensions: 119 × 74 × 42 mm (4.69 × 2.93 × 1.67 in.)  
 Operating Temperature: -10°C ~ 40°C (14°F ~ 104°F)  
 Operating Humidity: 0 ~ 95% RH, no condensation  
 Input Power: 100-240V~, 50/60Hz  
 Rated Load: Max. 10A (Incandescent Lamp), Max. 400W (LED/CFL)  
 What is in the Box: Touchscreen Switch S100 US × 1, Compliance Statement × 1, User Manual × 1, Screw Kit × 1, Wire Nuts Kit × 1, Wiring Sticker Sheet × 1

### In-app and on-device (local) Setting Comparison

In-app Setup Items	On-device Setup Comparison	
	Added via Aqara Home	Added via 3rd Party Matter Ecosystems (Apple, Google, etc.)
Theme Library	Brightness Adjustment	Brightness Adjustment
Screen Configuration (card layout; card sequence)	Proximity Activation	Proximity Activation
Device Linking	Sound Settings	Sound Settings
Scene Linking	Language Settings	Language Settings
Edit Device Card (Name/icon/location)	Screen Rotation	Screen Rotation
Power-Off Memory	Button Mode	Button Mode
Device Diagnostics	Reset Network	Reset Network
Search for Device	Standby Wallpaper	Standby Wallpaper
	/	Icon Settings (Card)
	Restart	Restart
	About	About

### Third-Party Ecosystem Function Comparison

via Matter						
	On/off switch	Wireless switch exposure (generic switch)	Power Metering	Timer control	log	Presence/Occupancy Sensor (name might vary depending on ecosystem's wording)
Apple Home	Y	Y	N	N	N	Y
Google Home	Y	N	N	N	N	Y
Amazon Alexa	Y	Y	N	N	N	Y
Samsung SmartThings	Y	Y	N	Y	Y	N
Home Assistant	Y	Y	Y	N	Y	Y
Homey	Y	Y	Y	N	Y	Y